



Comune di Vauda C.se

CIMITERO COMUNALE
LAVORI DI AMPLIAMENTO
E REALIZZAZIONE NUOVI LOCULI
PROGETTO DEFINITIVO - ESECUTIVO

5 Particolari costruttivi

progettati:

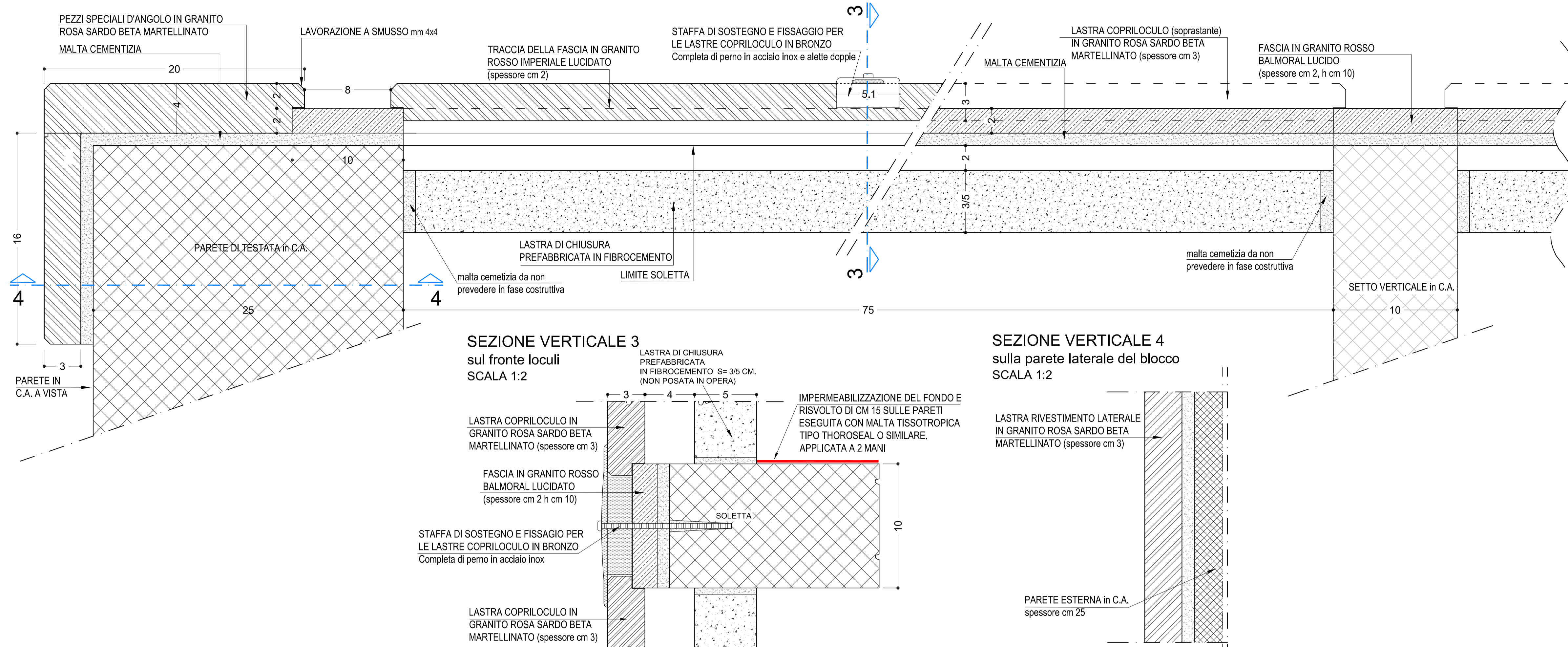
arch. Giovanni Paolo Pirello
arch. Valerio Bergagna Tospi
geom. Marco Perucco

via Marconi n. 10070 GARCISO (TO)
tel. 011 9269475 fax 011 7431111
e-mail: info@tetraquattro.it

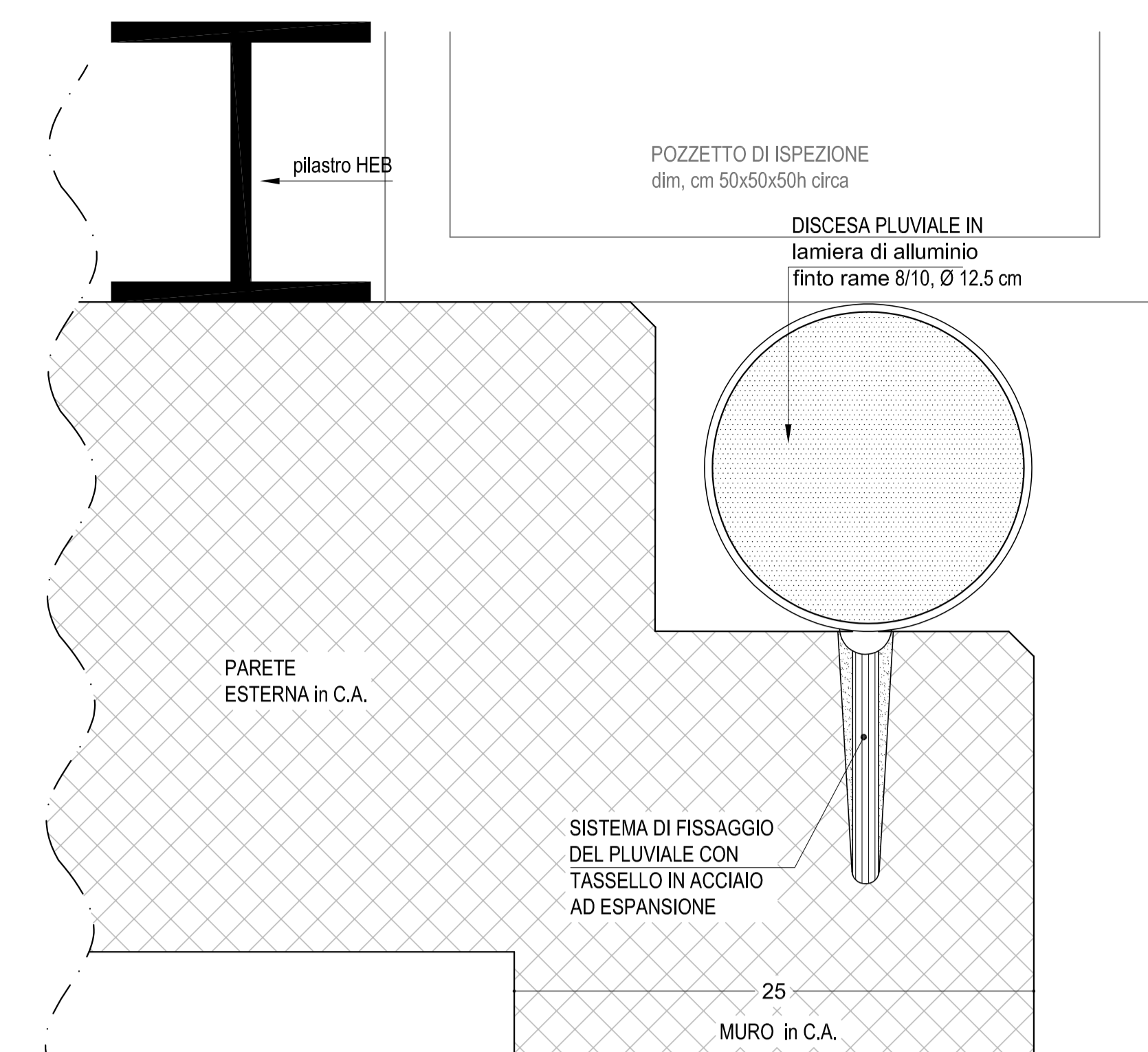
data: maggio 2023

SEZIONE ORIZZONTALE 1 SCALA 1:2

Sezione in corrispondenza delle lastre copriloculo

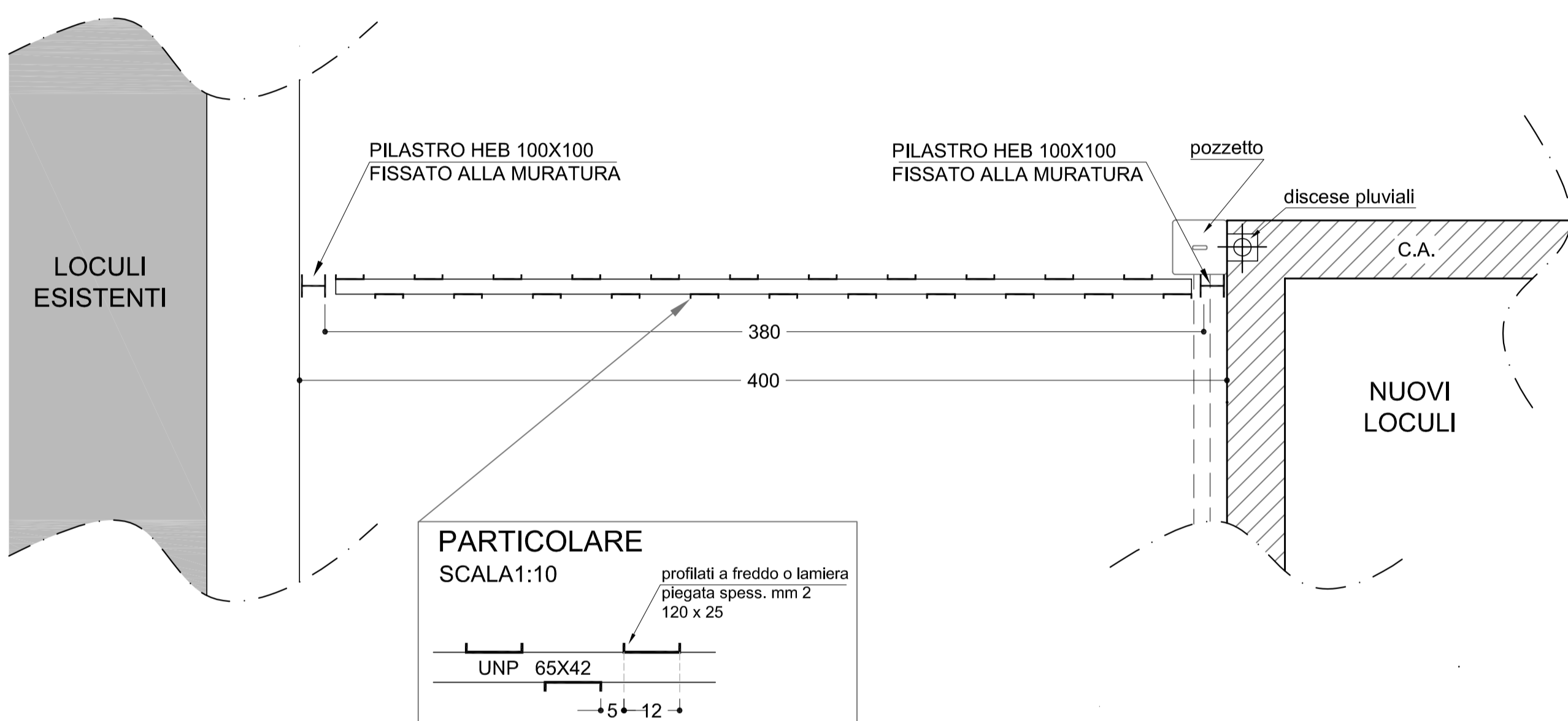


SEZIONE ORIZZONTALE 2 in corrispondenza della discesa pluviale SCALA 1:2



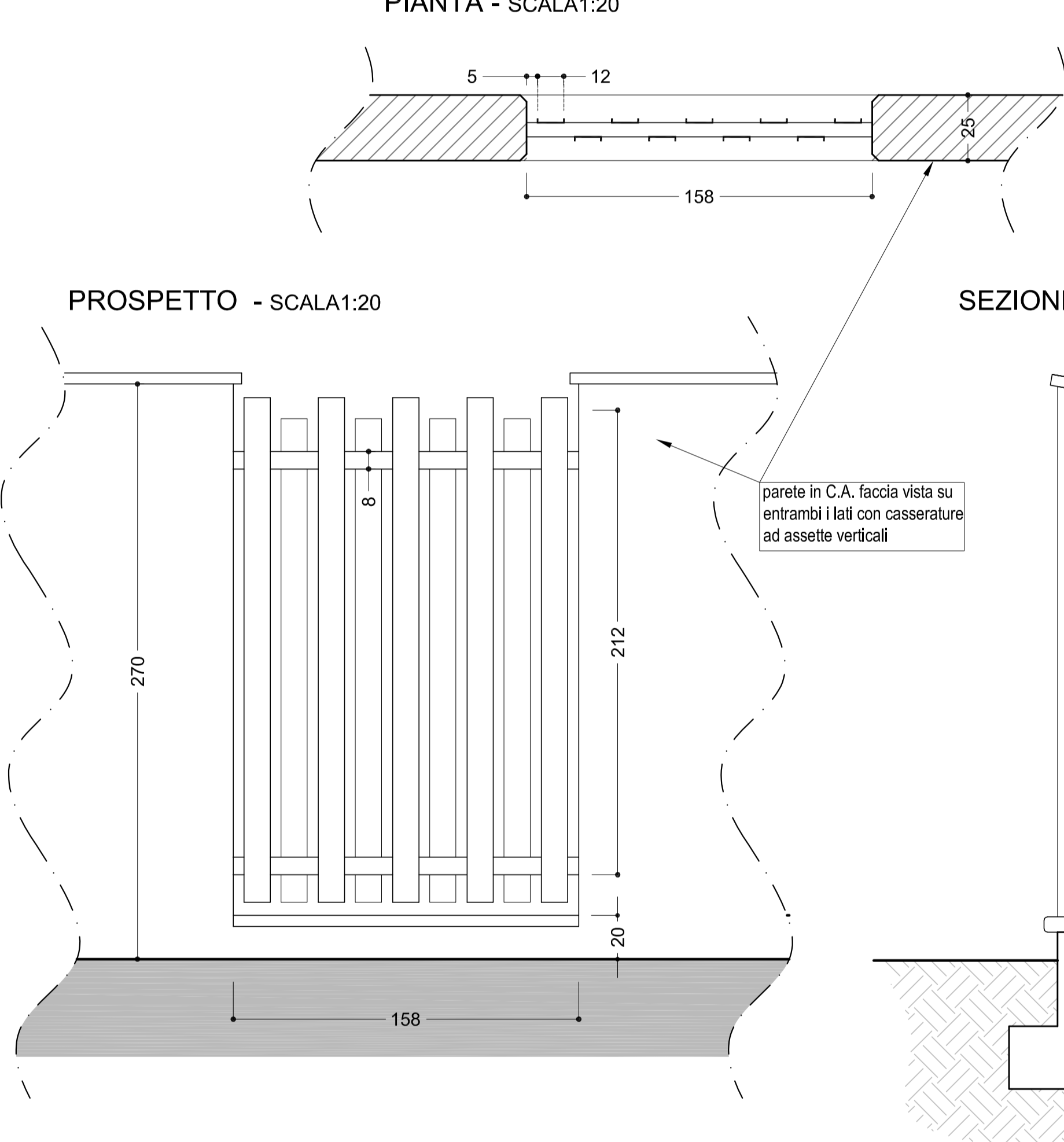
PARTICOLARI CANCELLO

PIANTA - SCALA 1:20



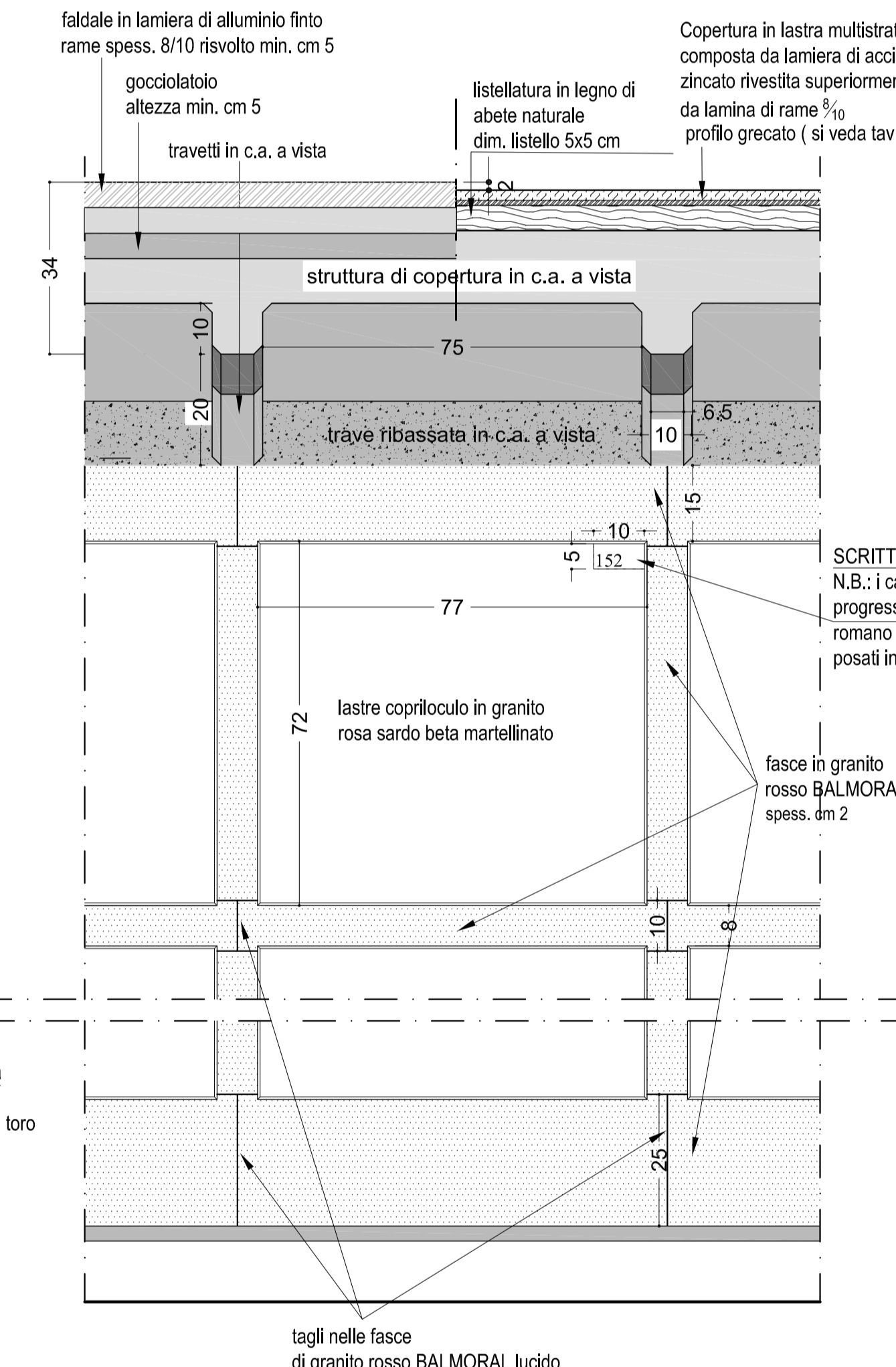
PARTICOLARI CANCELLATA SULLA MURATURA LATO EST

PIANTA - SCALA 1:20

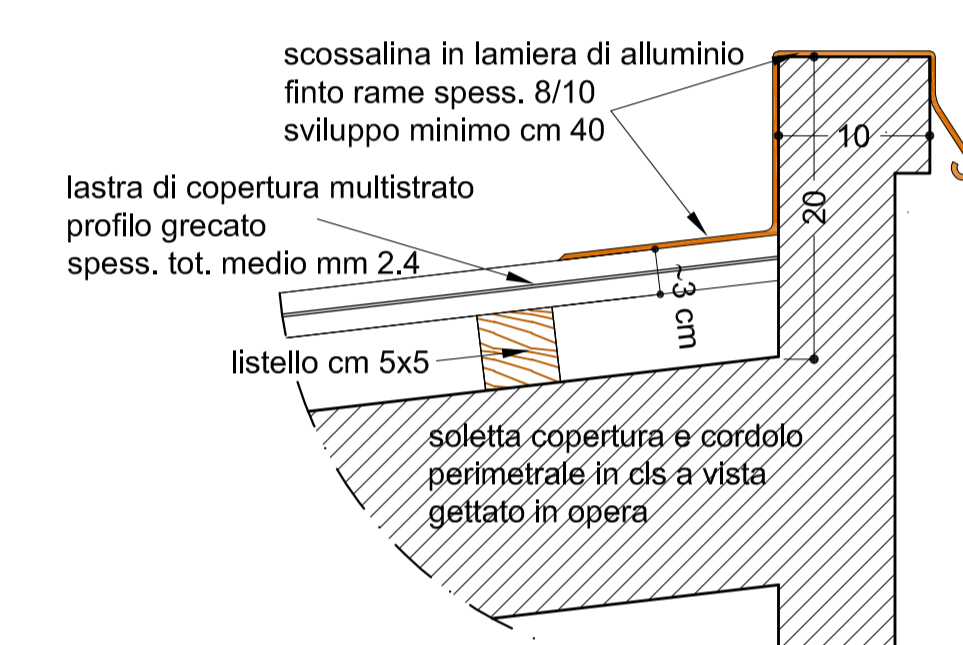


PROSPETTO TIPO FRONTE LOCULI SCALA 1:10

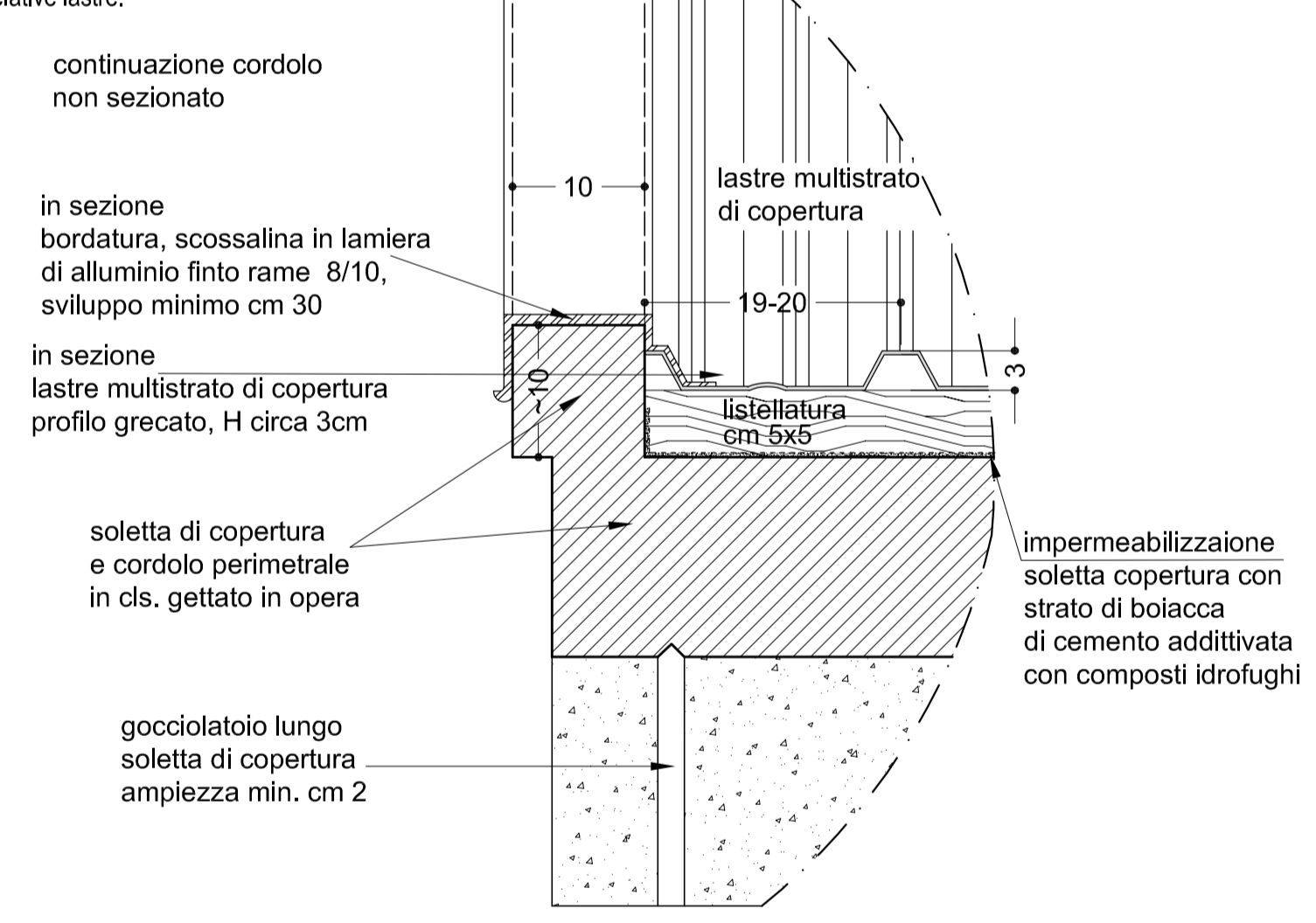
VISTA FRONTALE SEZIONATA



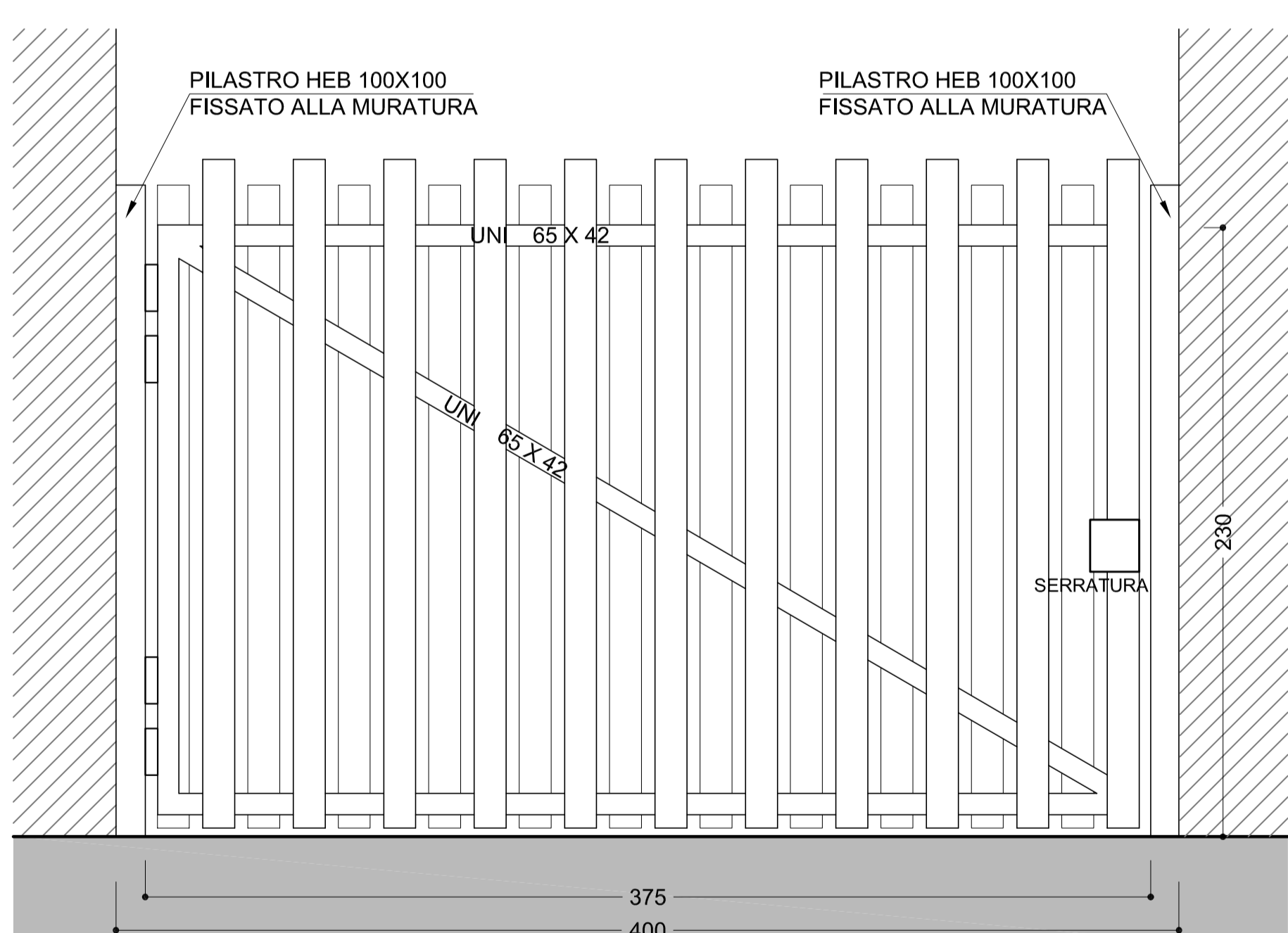
Particolare fissaggio lastre copertura in polycarbonato scala 1:5



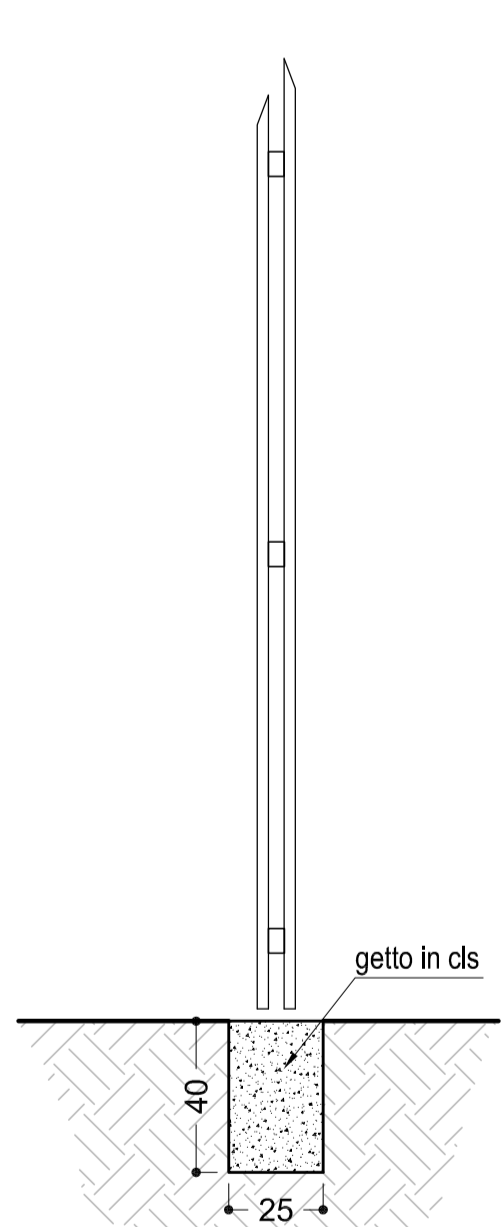
Particolare in corrispondenza dei cordoli perimetrali scala 1:5



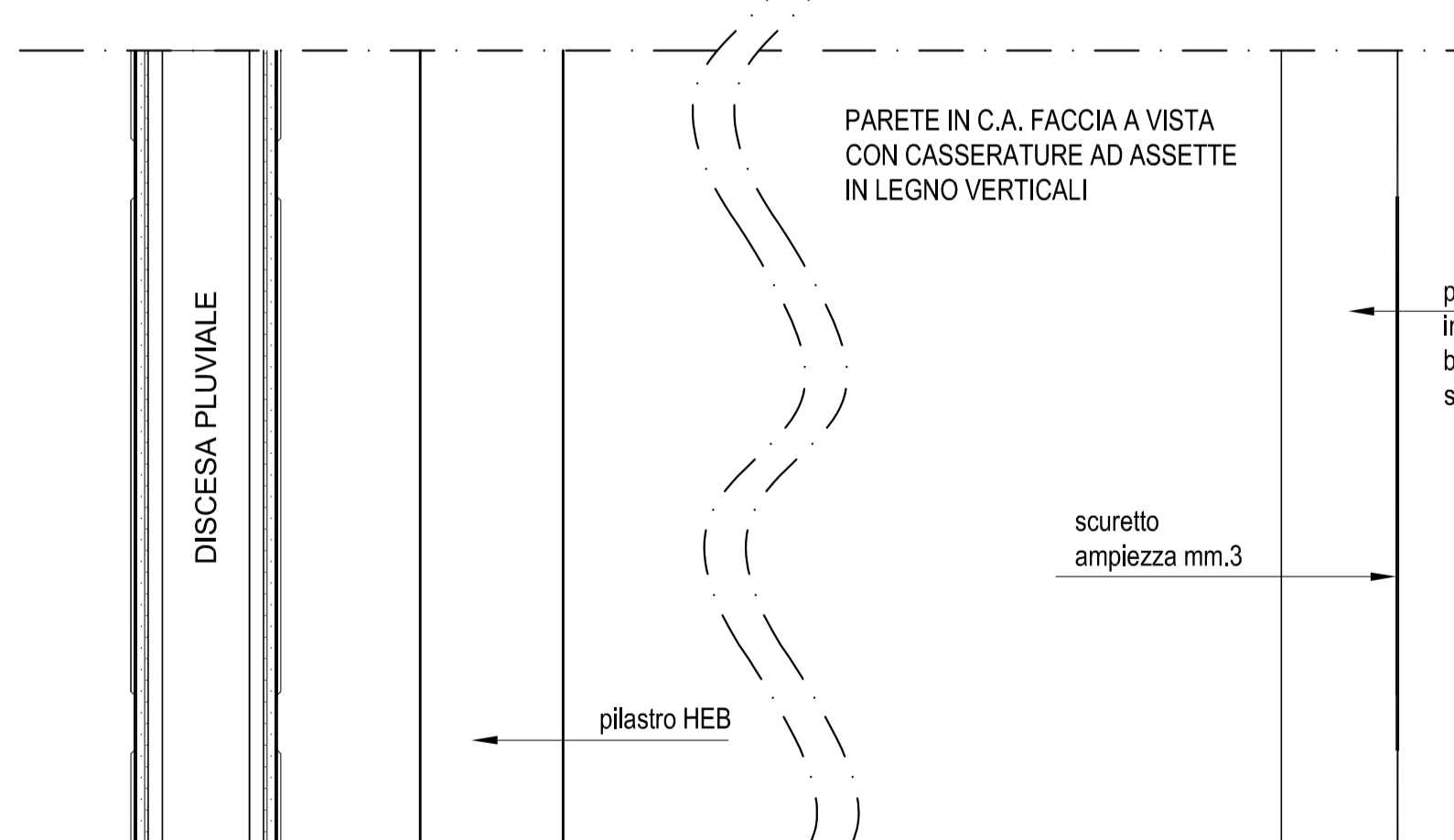
PROSPETTO INTERNO - SCALA 1:20



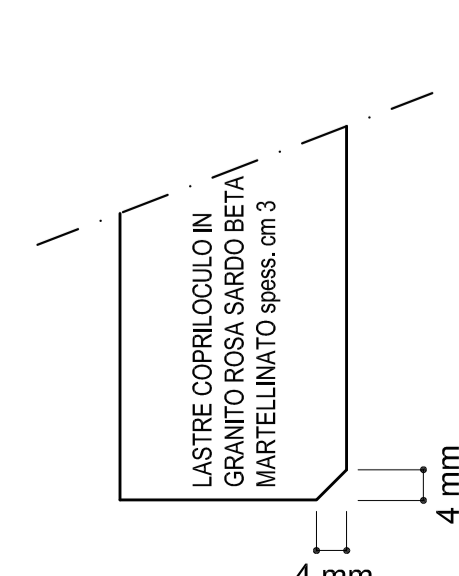
SEZIONE - SCALA 1:20



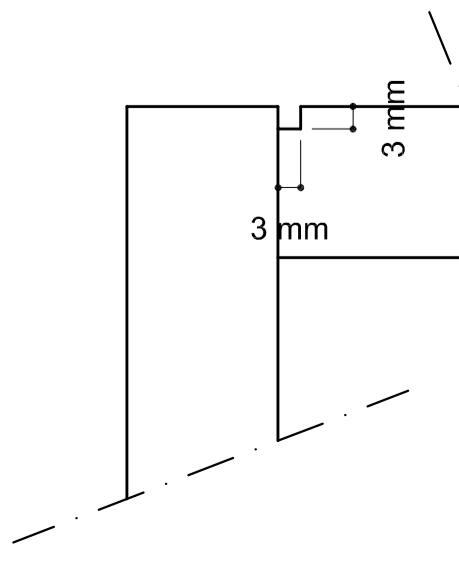
PROSPETTO TESTATE LATERALI LOCULI SCALA 1:10



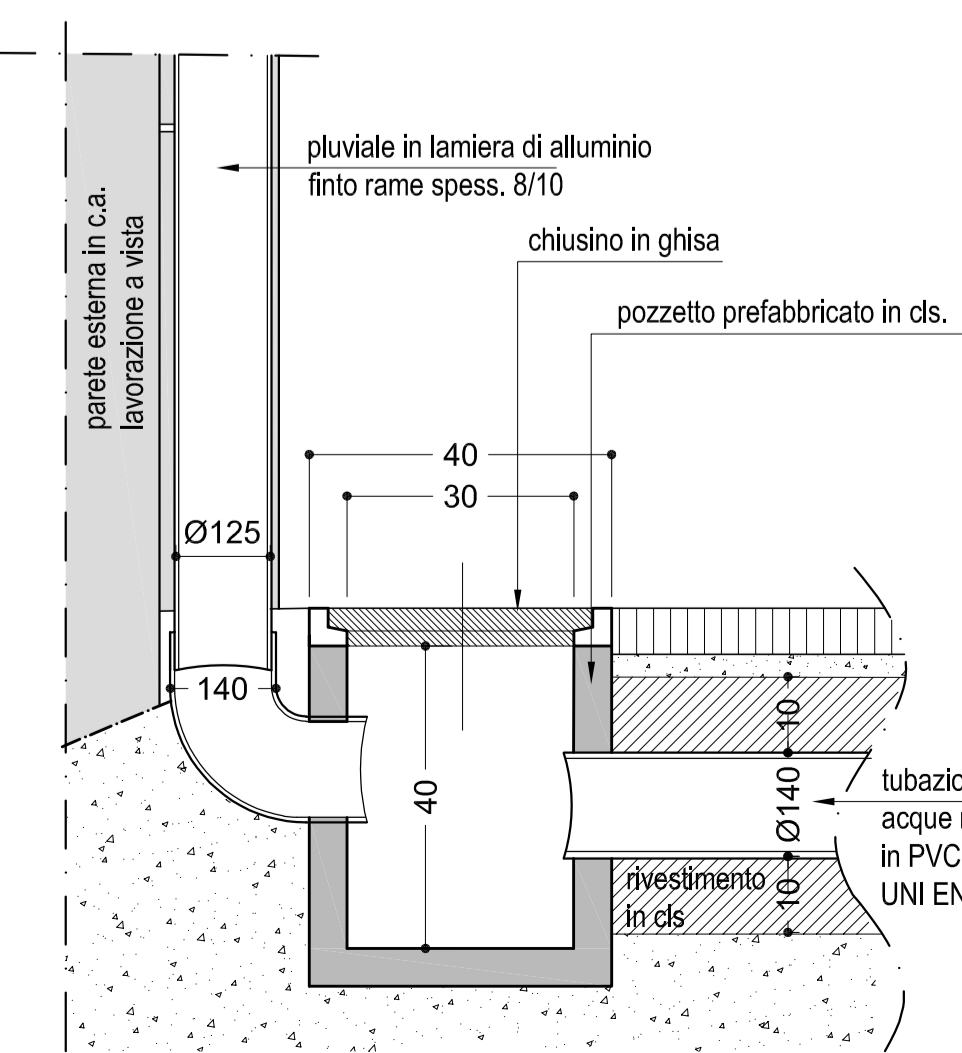
Particolare smussi ampiezza mm.4 SCALA 1:5



Particolare scurello ampiezza mm.3 SCALA 1:5

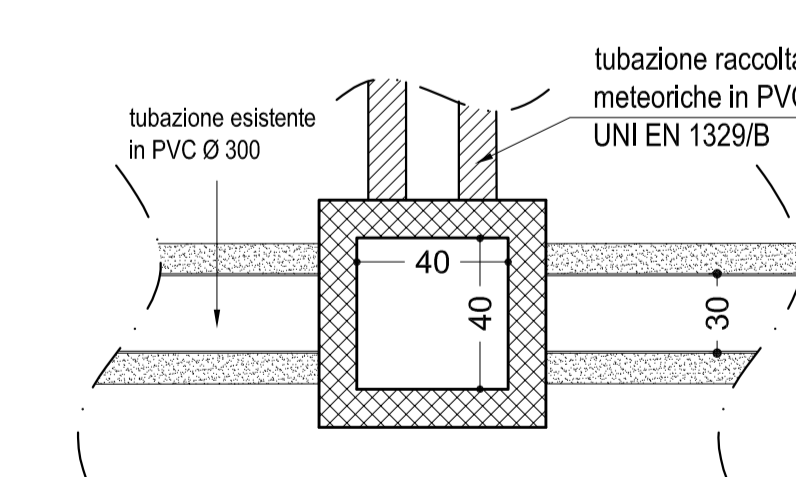


Sezione discese pluviali con pozzetto d'ispezione scala 1:10

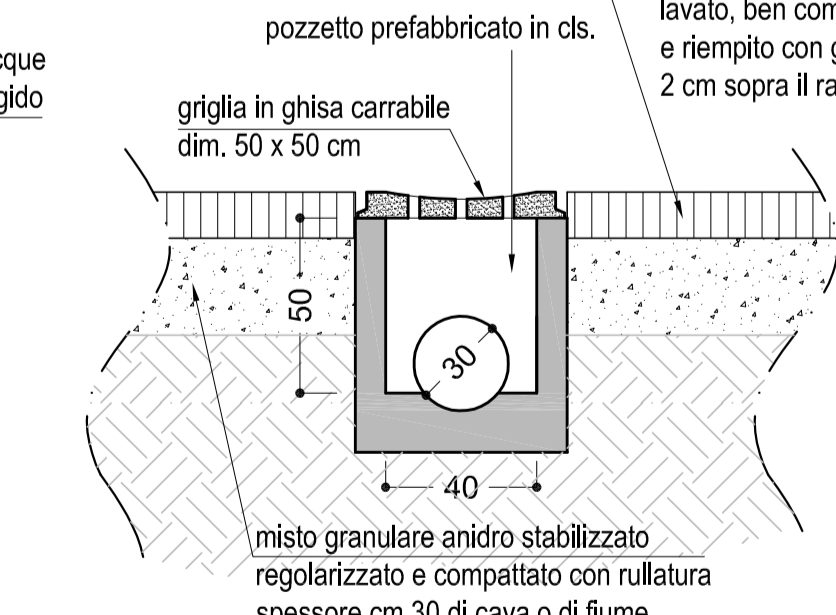


Caditoie rete raccolta acque bianche scala 1:20

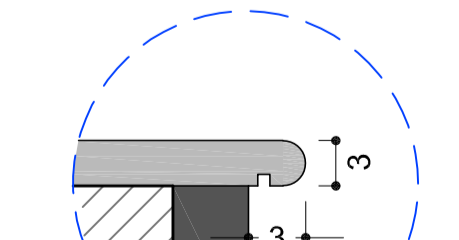
Pianta



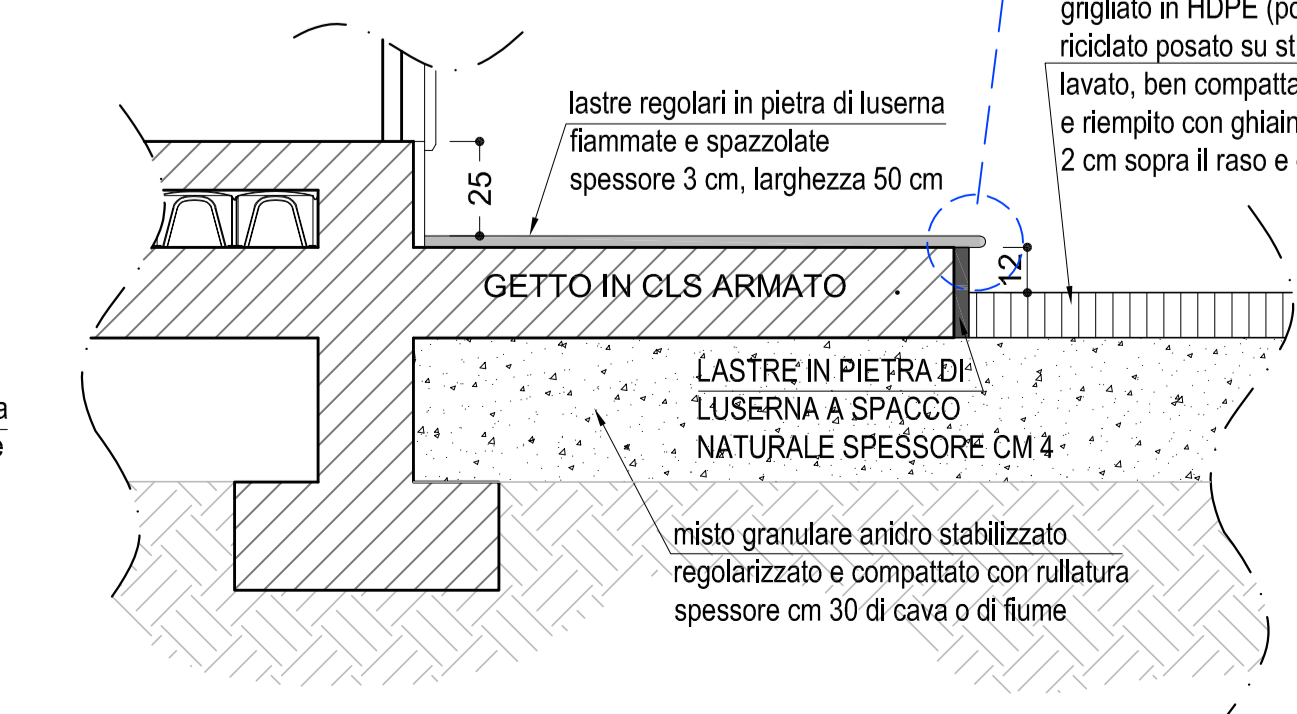
Sezione



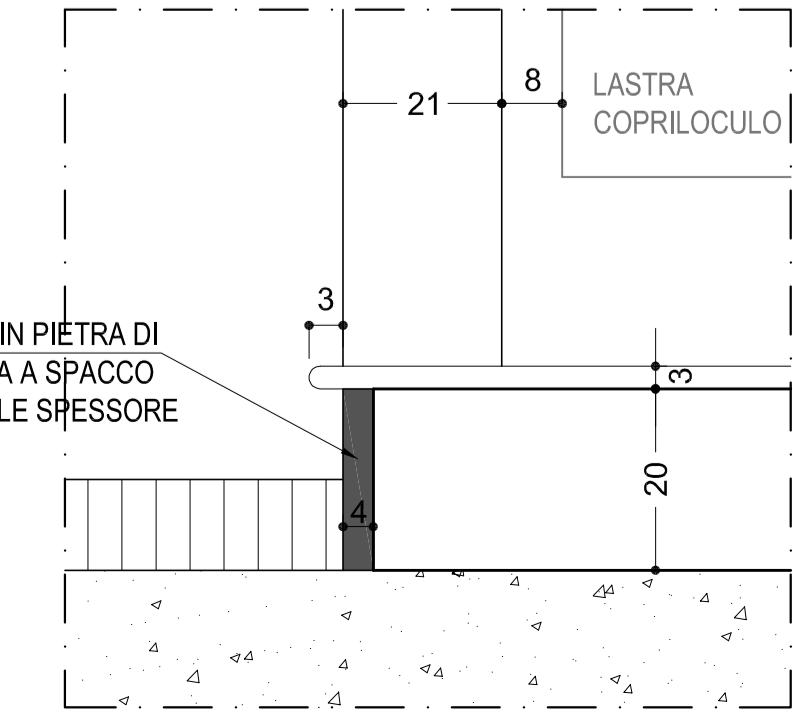
PARTICOLARE scala 1:5



PARTICOLARE MARCIAPIEDE scala 1:20



SEZIONE LATERALE scala 1:10



SEZIONE STRADA ACCESSO DI SERVIZIO LATO NORD SCALA 1: 25

